



户用储能系统



MPPT

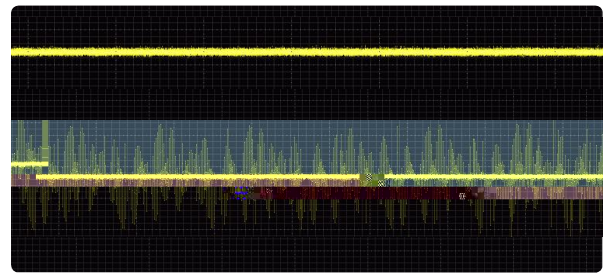
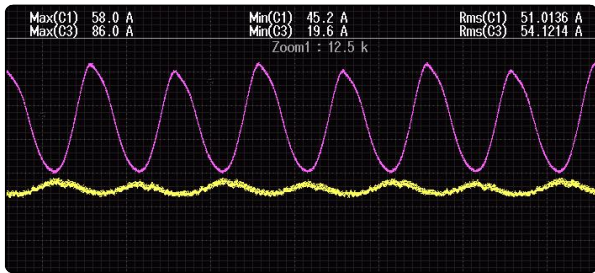
MPPT

99.9%

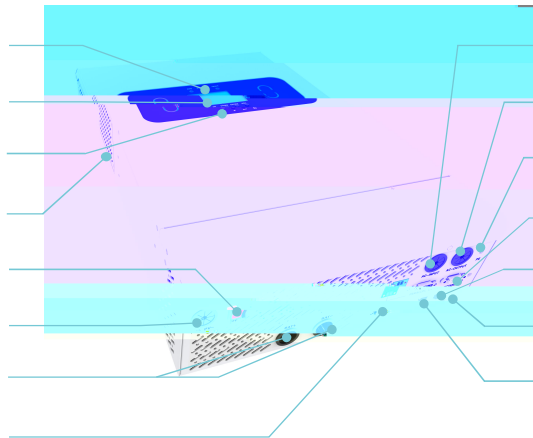
4G WIFI GPRS



10



- 1
- 2 LCD
- 3
- 4 ()
- 5
- 6 PV
- 7
- 8



- 9 AC
- 10 AC
- 11 AC
- 12
- 13 BMS
- 14
- 15 RS485



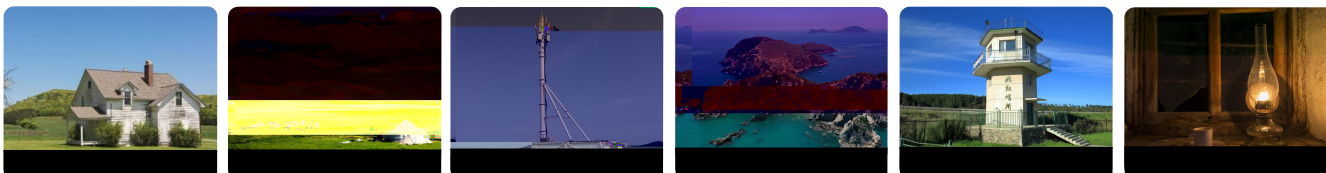
	48Vdc	
	8000VA/8000W	10000VA/10000W
	, 10	
	230Vac ±4%	
	50/60Hz ±0.3()	
	92%	
	34.7A	43.5A
	10ms()	
	5500W+5500W	
MPPT	90-450Vdc	
	500Vdc+500Vdc	
	180±5A	200±5A
PV		
	100±5A	120±5A
	220 / 230V	
	50 / 60Hz	
	40-60Vdc	
	180±5A	200±5A
W*D*H (mm)	630*450*135	
(kg)	26	26.5
	RS485	WIFI/4G
	-10°C-55°C	
	-20°C-60°C	
	5%-95%	
	2000m	
	IP20	
EMC	CE-LVD ; CE-EMC	
	IEC/EN62109-1/2,IEC/EN61000-6-1/3	



OFF-GRID SOLAR INVERTER



Scenarios of no power, lack of power, power instability area, no motor and other impact load scene



Integrated MPPT controller, with efficiency up to 99.9%.

With short circuit, under-voltage, overload, anti-reflux and other safety protection functions.

Compatible with lead-acid, lithium batteries, gel batteries, etc.

With two kinds of output modes (mains bypass & inverter output), it can supply the power uninterruptedly.

4 types of charging modes are optional: mains priority, photovoltaic priority, hybrid charging, only solar energy. RS485, WIFI or GPRS telecommunication modules are optional.



Adopt special inverter architecture to reliably suppress leakage current, leading the industry.

Excellent charging current control technology, effectively controlling the charging current ripple.

Can set the photovoltaic grid-connected mode.

Equipped with uphill driving function, with higher load power and more types of loads.

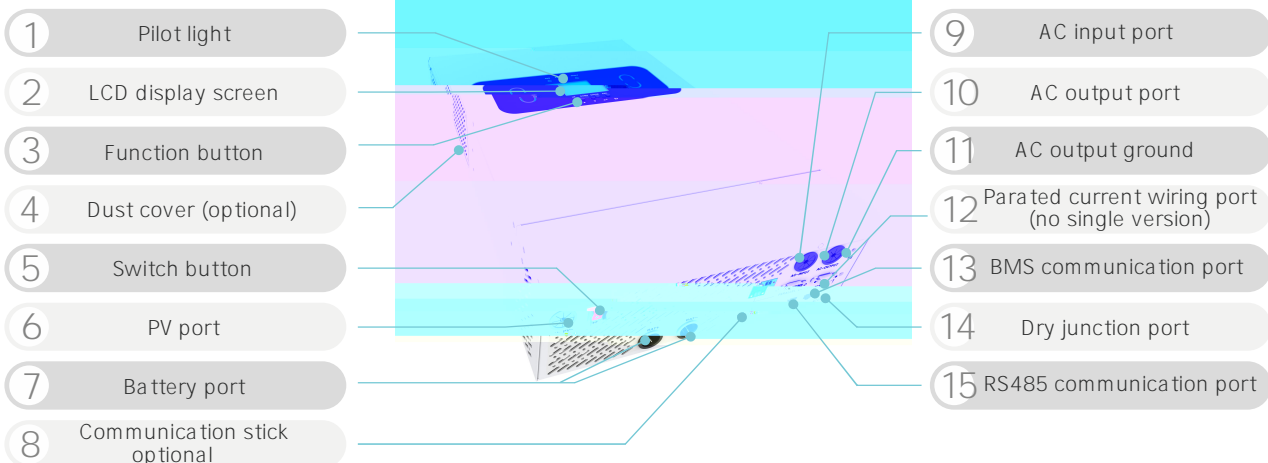
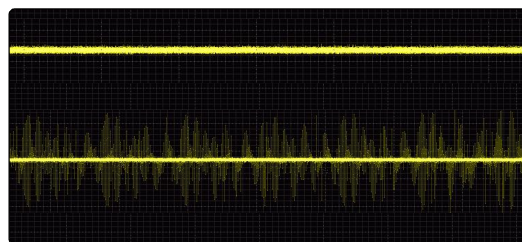
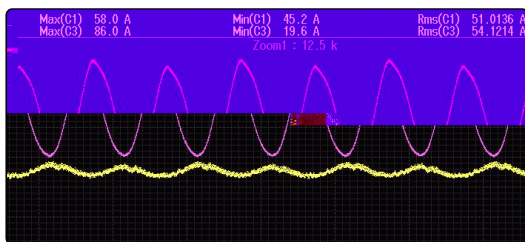
With automatic dust removal function.

No battery, bypass output ensures uninterrupted power for critical loads.

The Maximum Supports up to 10 parallel machines, and three-phase group grid.

Power grid self-adaptation, supporting normal power generation under weak grid conditions.

The appearance is like a robotic cat, lively and friendly. Customizable design to meet different customer needs.





Battery Voltage	48Vdc	
Battery Type	Lead-acid, lithium batteries, gel batteries, etc	
Rated Output Power	8000VA/8000W	10000VA/10000W
Parallel Function	N/A	Yes, up to 10 units
Rated Output Voltage	230Vac ±4%	
Rated Output Frequency	50/60Hz ±0.3(Adaptive)	
Output Waveform	Pure sine wave	
Efficiency(Peak)	92%	
Rated Current	34.7A	43.5A
Transfer Time	10ms(Typical value)	
Max Input Power	5500W+5500W	
MPPT Voltage Range	90-450Vdc	
Max Input Voltage	500Vdc+500Vdc	
Max Charging Current	180±5A	200±5A
PV Countercurrent Protection	Yes	
Max Charging Current	100±5A	120±5A
Rated AC Input Voltage	220 / 230V	
Rated Frequency	50 / 60Hz	
Voltage Range	40-60Vdc	
Max Charging Current	180±5A	200±5A
Dimension. W*D*H(mm)	630*450*135	
Installation Method	Wall-mounted	
Weight (kg)	26	26.5
Communication Mode	RS485 Optional WIFI/4G	
Operating Ambient Temperature	-10°C-55°C	
Storage Ambient Temperature	-20°C-60°C	
Humidity	5%-95% Non-condensation	
Altitude	2000m	
Protection Degree	IP20	
Safety Certification	CE-LVD ; CE-EMC	
EMC Certifications	IEC/EN62109-1/2,IEC/EN61000-6-1/3,	

Specifications are subject to change without advance notice.