



"  
2019

"

GB/T36000-2015

GB/T36001-2015

2020 1 1 2020 12 31

"

"

"

"

"

" " " " "

PDF

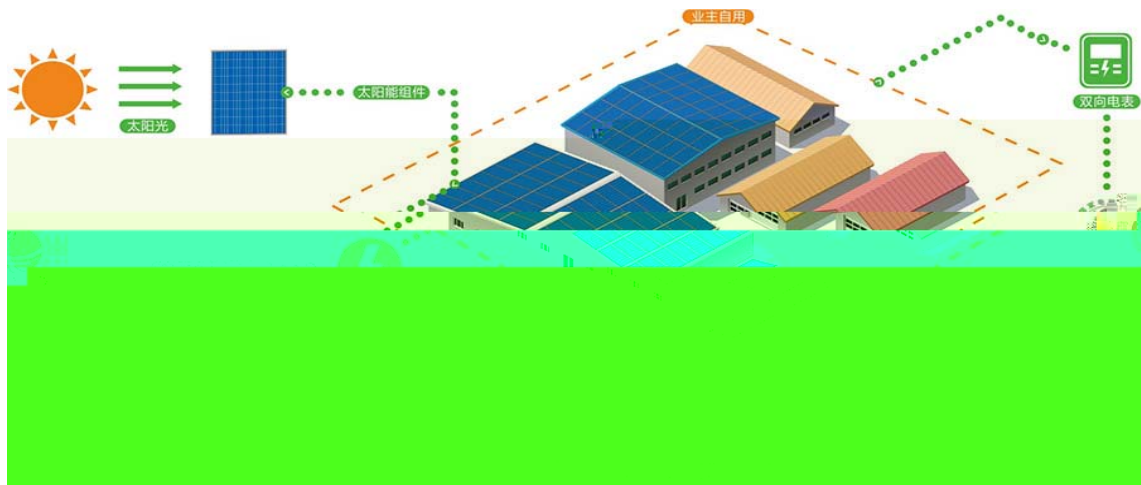
	.....	1
	.....	2
	.....	4
1	.....	4
1.1	.....	4
1.2	.....	4
1.3	.....	12
2	.....	13
3	.....	13
3.1	.....	13
3.2	.....	14
3.3	.....	14
3.4	.....	14
3.5	.....	14
4	.....	14
	.....	17
1	.....	17
2	.....	18
3	.....	19
	.....	19
1	.....	19
1.1	.....	19
1.2	.....	20
2	.....	20
2.1	.....	20
2.2	.....	21
2.3	.....	21

2.4	.....	21
3	.....	21
3.1	.....	22
3.2	.....	22
4	.....	23
5	.....	24
5.1	.....	25
5.2	.....	25
5.3	.....	26
5.4	.....	27
	.....	29
1	.....	29
2	.....	30

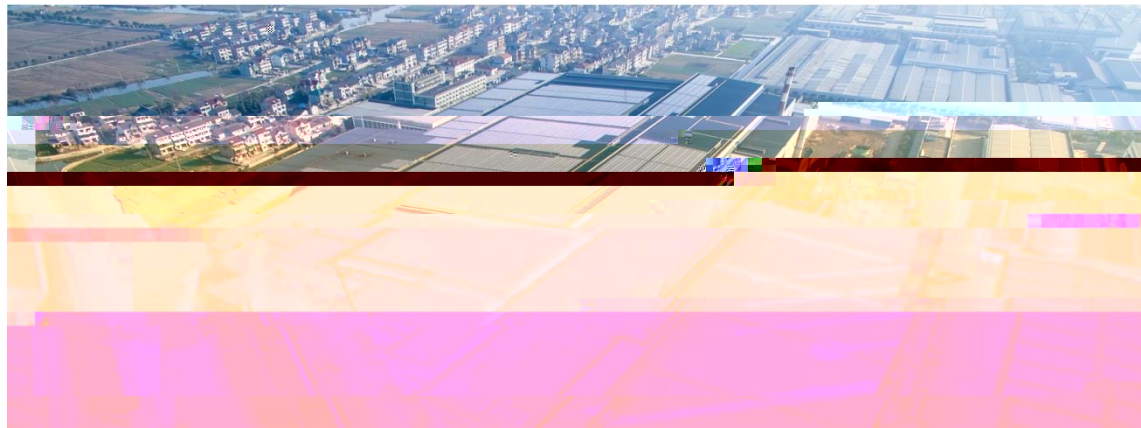


1

A



B



1Mhp

1Mhp

"

"

12000

C



“ ”

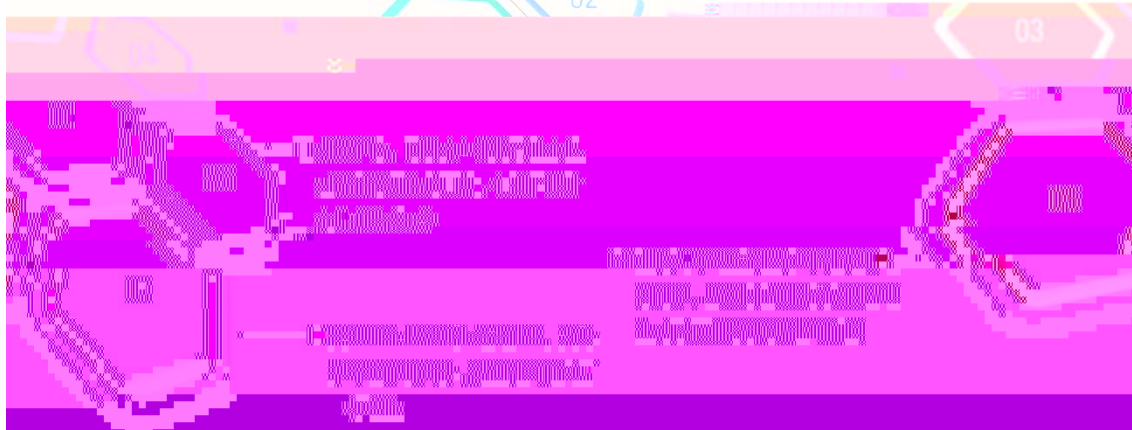
3KW

25

D

“通过享受政府补贴或收取  
屋顶租金，获得经济收益”

“安装光伏组件后，对屋顶进行有效  
的隔热，降低了顶层楼面空调的使  
用率”

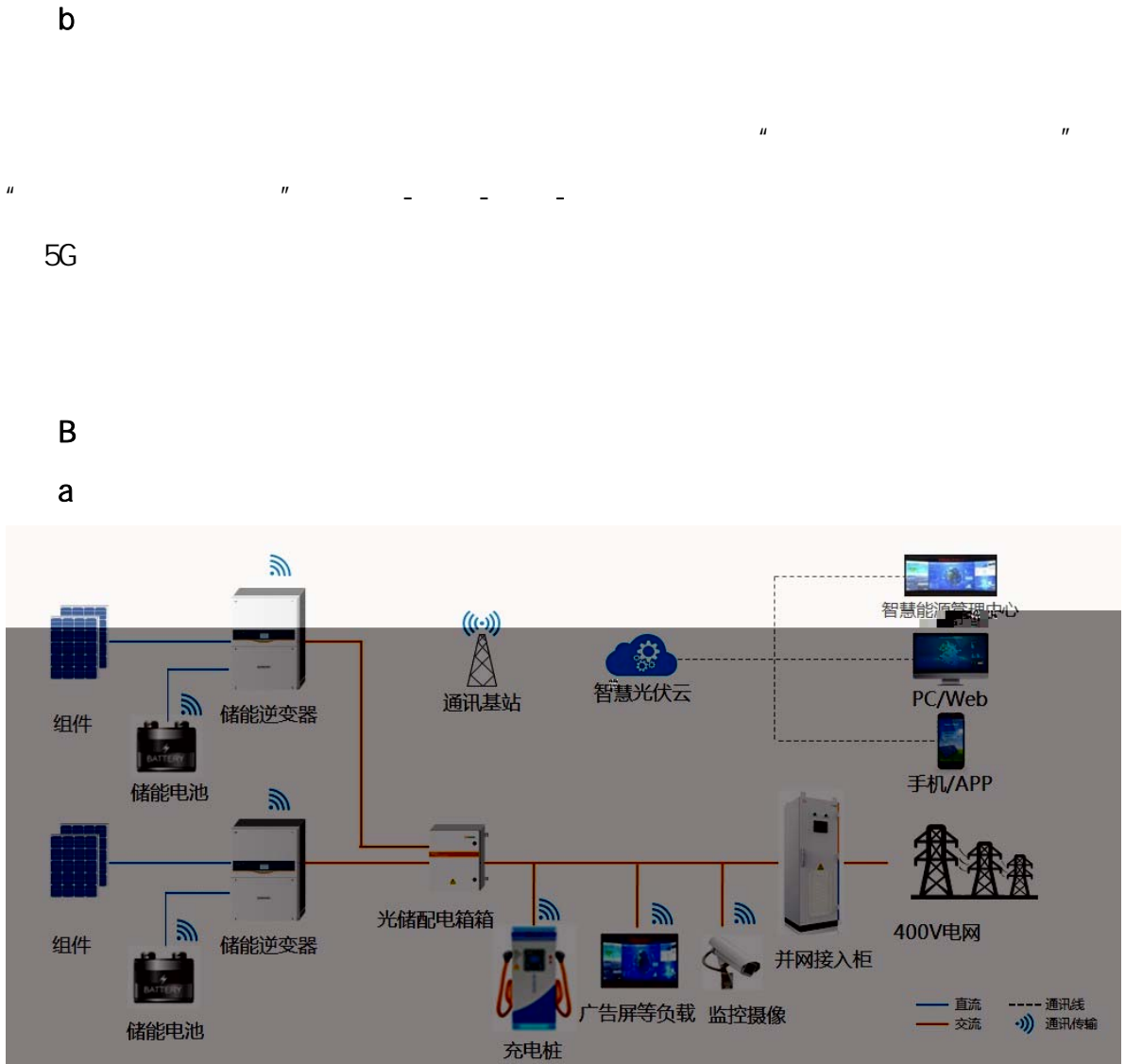


“ ”

2019

42





b

1

2

3

4

C

1

2

3

4



D

1

- -

2

3

APP

4

LCD

E

1

2

3 5G

APP

4

5

6

3

"

App

"

A

1

2

3



B



C

4

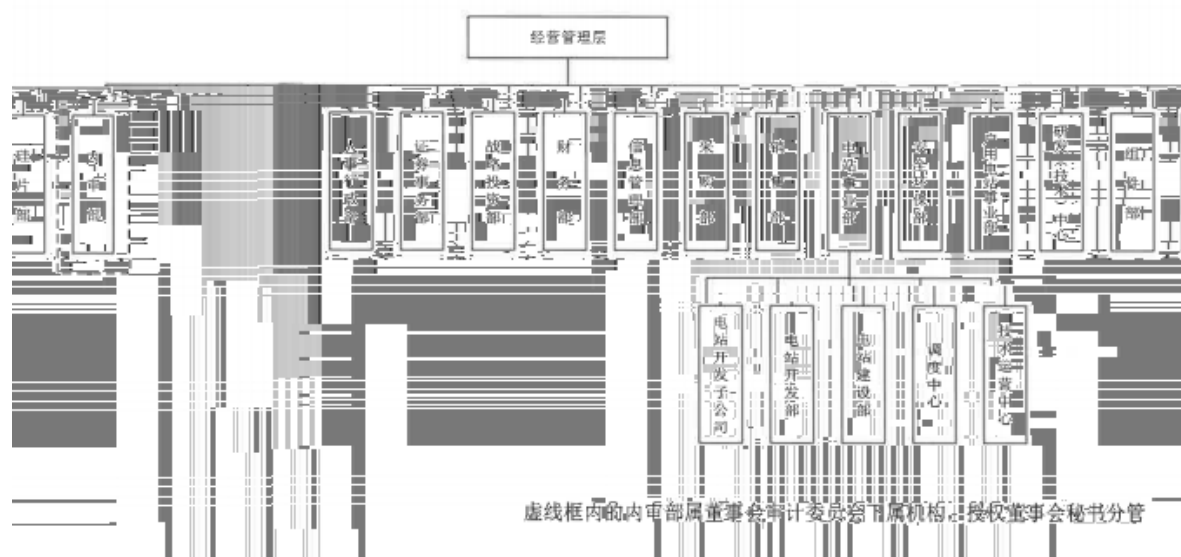
500Wp

60

72

158.75

a

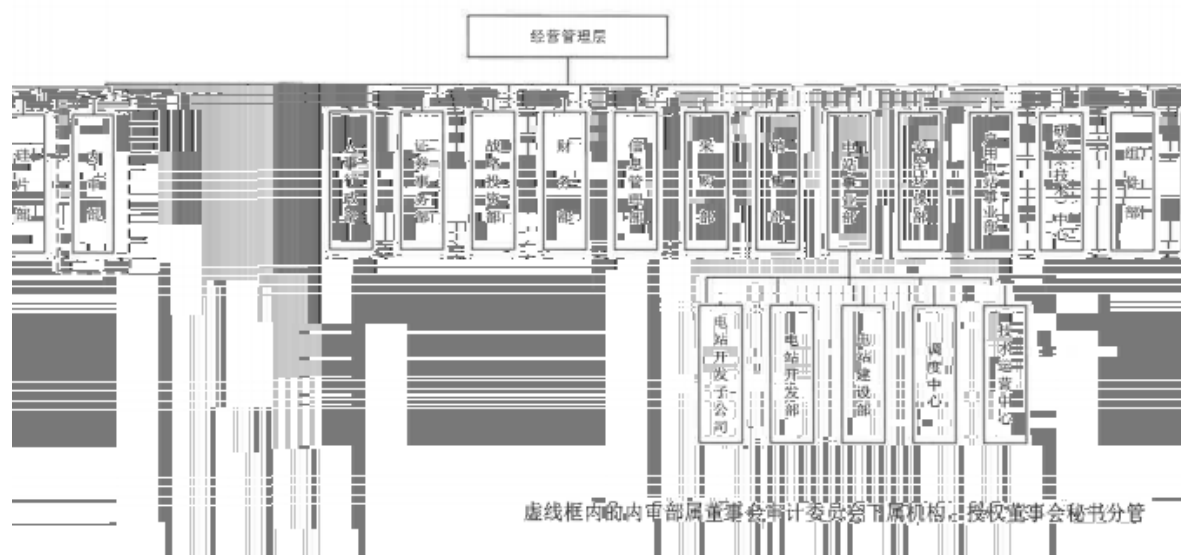


2

“ ”

3

3.1



3.2

3.3

7

3

3.4

3

3.5

4

Zhe

20

20

20

20

20

20

20

20

20

20

20

20

20

20

20

20

20

20

20

20

20

20

20

20

20

20

20

20

20

20

20

20

20

20

20

20

20

20

20

20

20

20

20

20

20

20

20

20

20

20

20

20

20

20

20

20

20

20

20

20

20

20

20

20

20

20

20

20

20

20

20

20

20

20

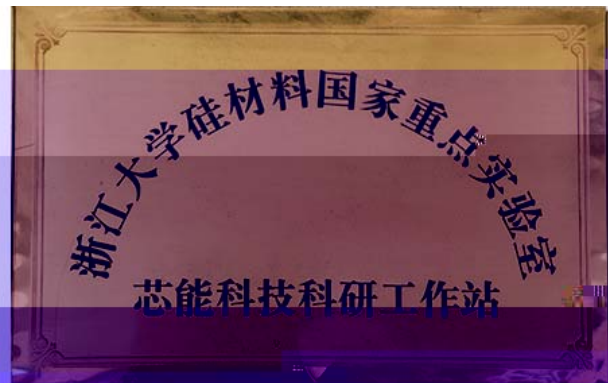
20

20

"	"		
2017			2018
2017			

			2019 2
"	"	/	

1



2011

”

”

2014 2017

---

2021	4		4	69	5	
		( )			15	10
		12				2-4
			2	4		4

2

**3**

“

”

**1**

**1.1**

“

”

1.2

“

”

“

”

2

2.1

'

" "

2018

"

"

2 2

2 3

2 4

3

3.1

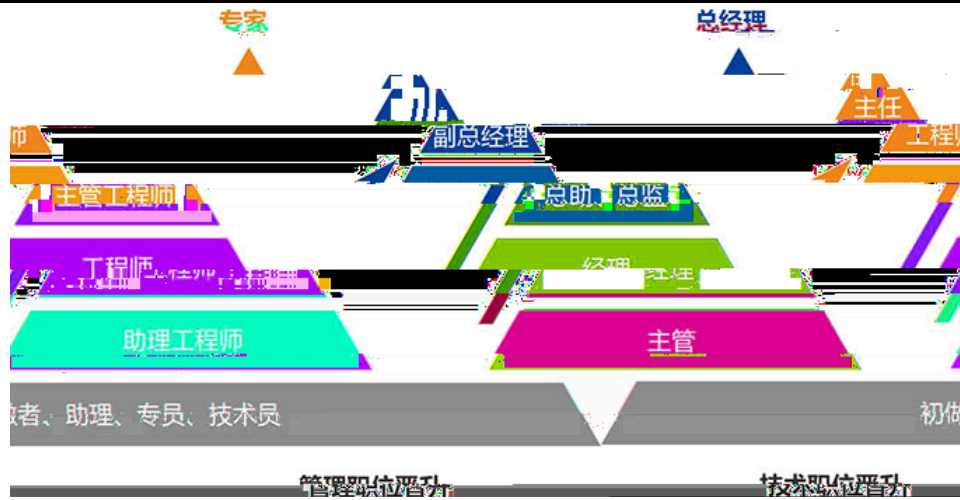
100%

100%

3.2

" "

" "



1

"

"

2

"

"

3



"

"

"

"

5.1

"

"

2017

5.2

			/	
			1 /	

			1 /	
			1 /	

5.3

2021



5.4

“

”

“

”

“

”

”

”



"

"

**1**

			/
		1	
		2	
		3	
		1	
		2	
		3	
		1	
		2	

100%

**2**