



"
2019

"

GB/T36000-2015

GB/T36001-2015

2020 1 1 2020 12 31

"

"

"

"

"

"

"

"

"

"

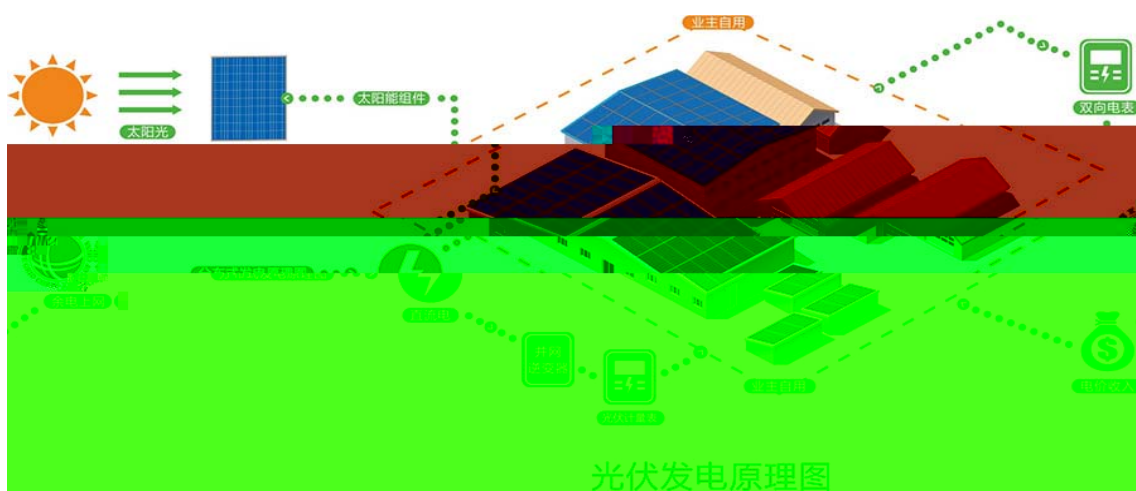
PDF

	1
	2
	4
1	4
1.1	4
1.2	4
1.3	12
2	13
3	13
3.1	13
3.2	14
3.3	14
3.4	14
3.5	14
4	14
	17
1	17
2	18
3	19
	19
1	19
1.1	19
1.2	20
2	20
2.1	20
2.2	21
2.3	21

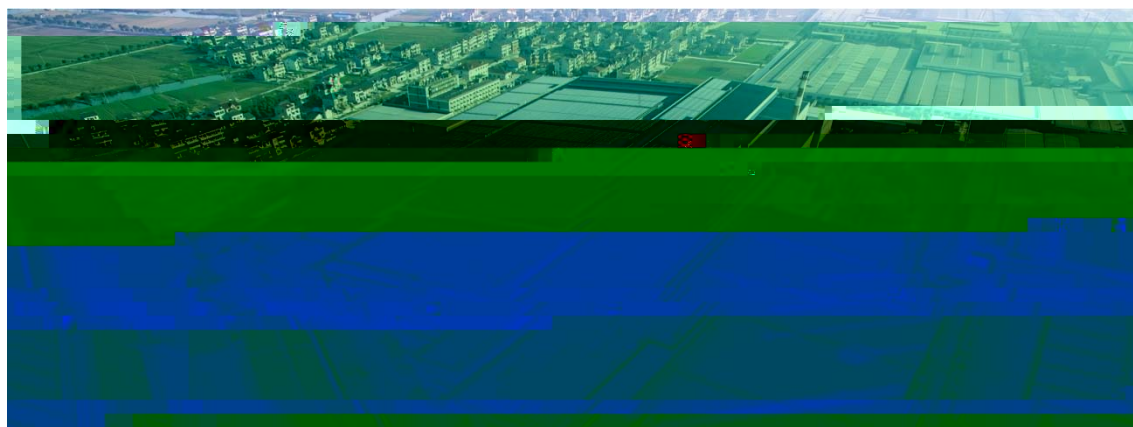
2.4	21
3	21
3.1	22
3.2	22
4	23
5	24
5.1	25
5.2	25
5.3	26
5.4	27
	29
1	29
2	30

1

A



B



1Mhp

1Mhp

"

"

12000

C



“ ”

3KW

25

D



“ ”

2019

42

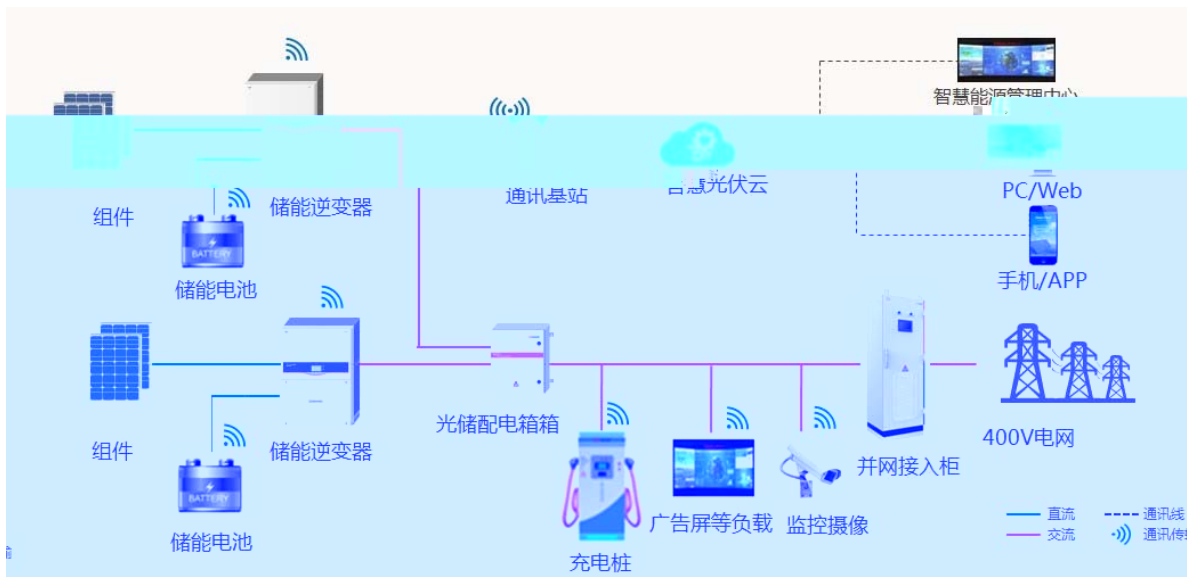
b

" " " "

5G

B

a



b

1

2

3

4

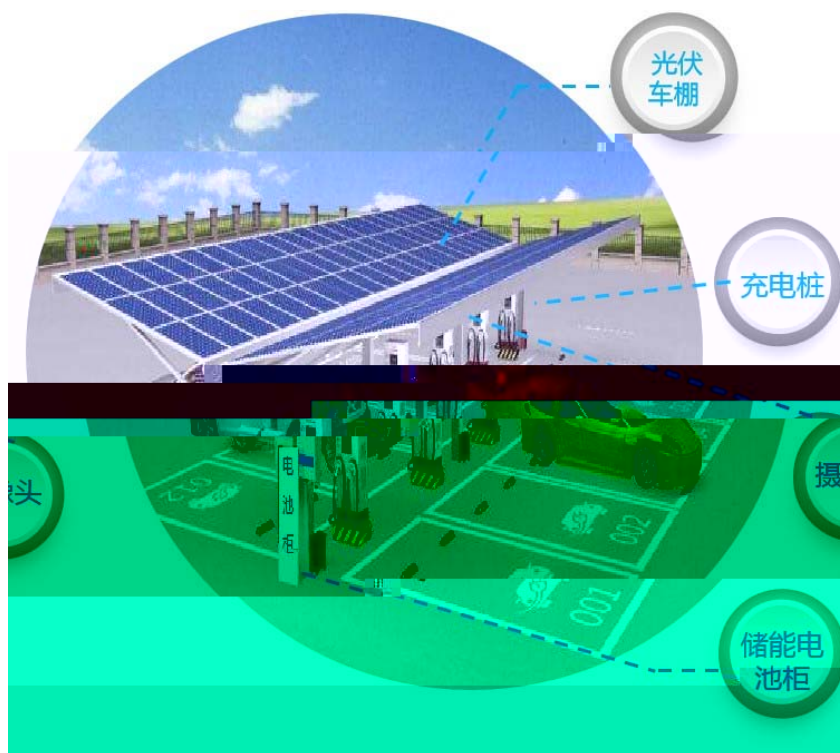
C

1

2

3

4



D

1

- -

2

3

APP

4

LCD

E

1

2

3 5G

APP

4

5

6

3

"

App

"

A

1

2

3



B



C

4

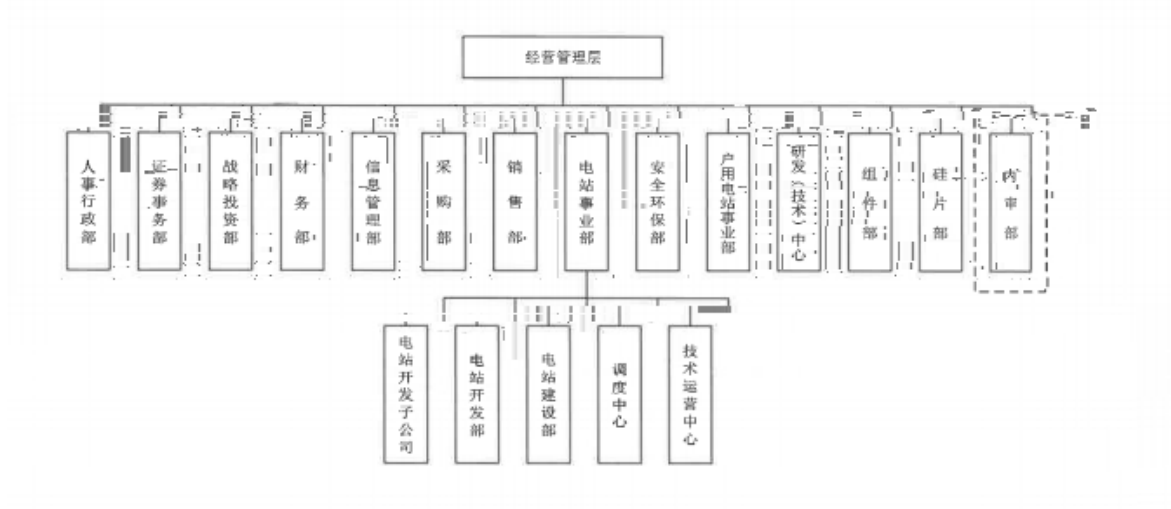
500Wp

60

72

158.75

a



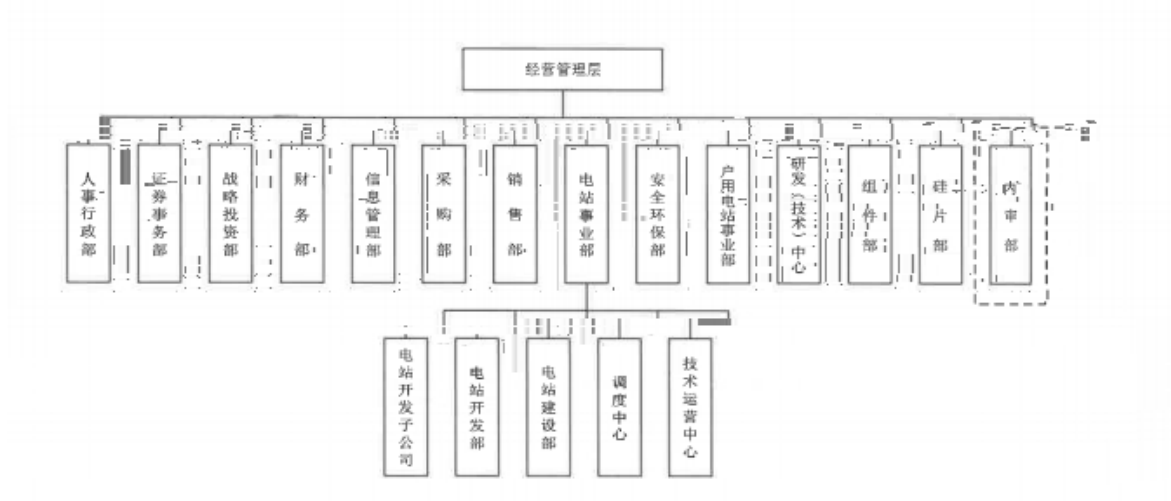
虚线框内的内审部属董事会审计委员会下属机构，授权董事会秘书分管

2

“ ”

3

3.1



虚线框内的内审部属董事会审计委员会下属机构，授权董事会秘书分管

3.2

3.3

7

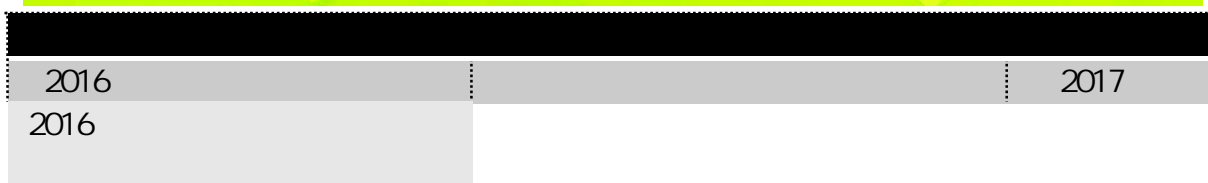
3

3.4

3

3.5

4



"	"		
2017			2018
2017			

			2019 2
"	"	/	

1



2011

”

”

2014 2017

2021	4		4	69	5	
		()			15	10
		12				2-4
			2	4		4

2

3

“

”

1

1.1

“

”

1.2

"

"

"

"

2

2.1

'

" "

2018

"

"

2 2

2 3

2 4

3

3.1

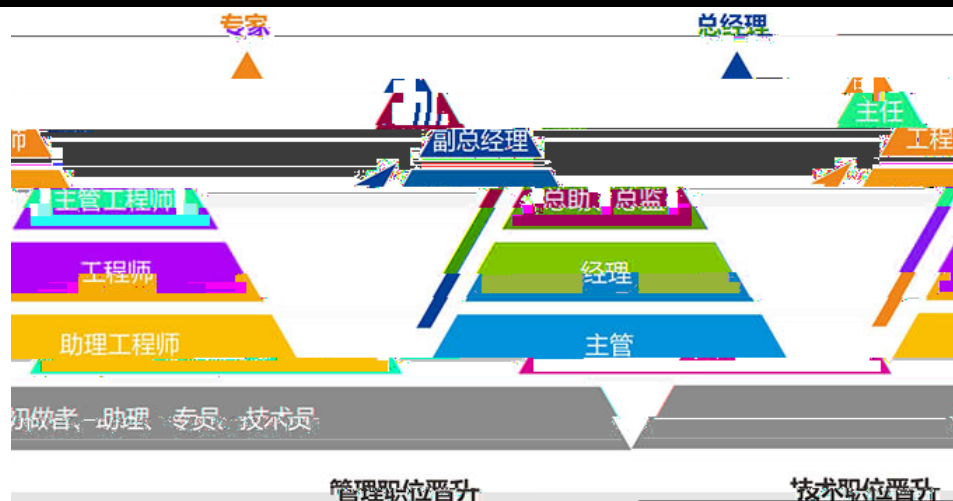
100%

100%

3.2

" "

" "



1

"

"

2

"

"

3

				"			"
		2020					
					1GW		10
		40			100		
3				1			
						"	"
					30		
			2019				
				2019			
							2017
		5	"	"	"	"	
					2018	"	---
	"		2018		"	---	"
"			"	2019			
		2020			"	"	

"

"

"

"

5.1

"

"

2017

5.2

			/	
			1 /	

			1 /	
			1 /	

5.3

2021



5.4

“

”

“

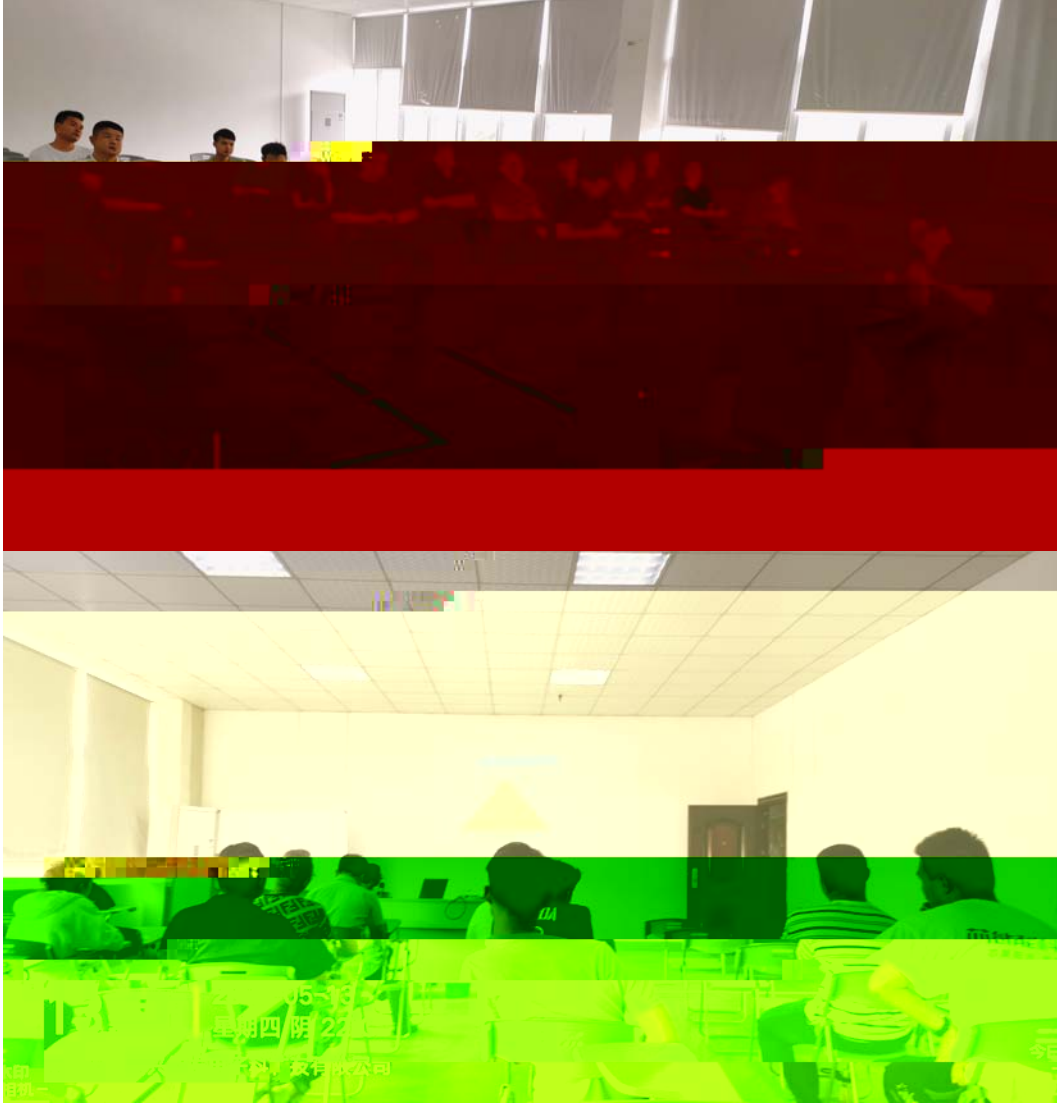
”

“

”

”

”



"

"

1

			/
		1	
		2	
		3	
		1	
		2	
		3	
		1	
		2	

100%

2